

CC-ITES

Competences Center: Interfaces – Tribocorrosion and Electrochemical Systems.

Faculty of Engineering, Dunarea de Jos University of Galati, Romania.

www.cc-ites.ugal.ro

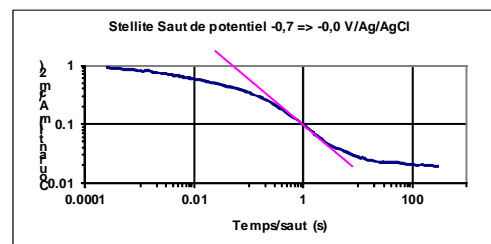
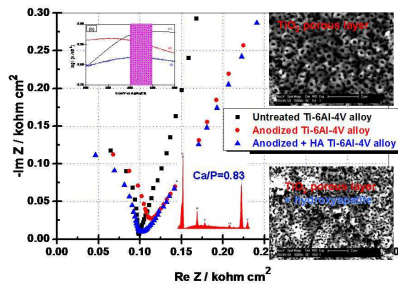
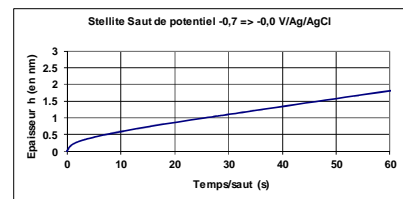
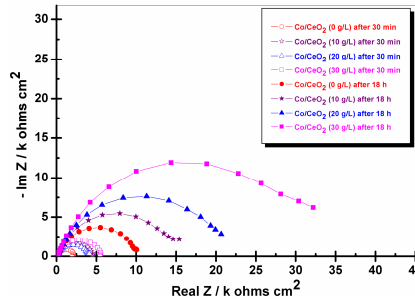
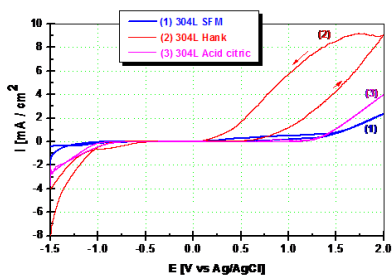
Electrochemical Workstation: Radiometer Copenhagen PGZ 301 Dynamic EIS and Voltametry.

Radiometer Copenhagen PGZ 301 Dynamic EIS and Voltametry.



Amperometry
Potentiometry
Coulometry
Cyclic voltametry
Electrochemical Impedance Spectroscopy
Galvanic Cells
Controlled by VoltaMaster 4 software

DC and AC electrochemical analysis applications in corrosion, passivation, depassivation, passive film growth and thickness, pitting tests, battery testing, fuel cells, electroplating, electrocatalysis, nano materials, coatings and sensor development and includes a series of potentiostats and current/voltage boosters.



Mechanism and kinetics of electrodeposition and materials degradation in specific environments